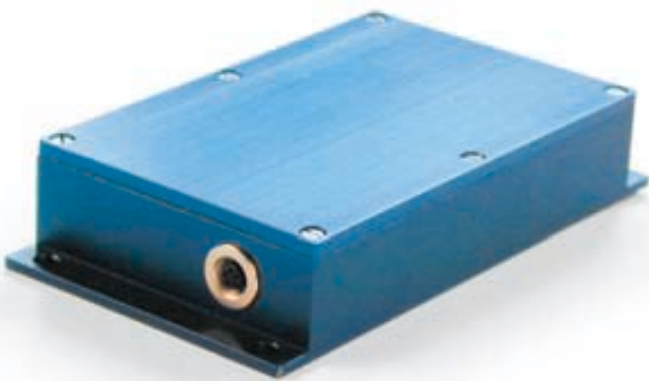


The g-log data logger for transport monitoring



The g-log data logger measures and records shock, vibration and environmental influence

The transport of precious or sensitive goods often sets high demands on packaging and handling. But proper packaging does not mean that the shipped goods will arrive intact at their destination. Using shock and environmental recorders for transport monitoring helps to close this gap in the quality management system. The g-log data loggers can be compared to black boxes. During transport they work completely autonomously and record shock events, vibrations and climatic conditions, together with a time stamp.



g-log can record shock, vibration, temperature and humidity



Transport of freight by truck, ship, train or airplane. During handling damage of the goods can occur. But where and when? The g-log can tell you!

Applications

- Shipment monitoring
- Package testing
- Quality assurance during transportation
- Safeguarding hazardous cargo
- Monitoring sensitive devices during normal use
- Supervising cargo handling equipment
- Structural and seismic damage detection

Features

- High memory capacity
- 12 months battery life-span
- Simple to mount
- Tamper-proof and password protected
- Non-volatile memory

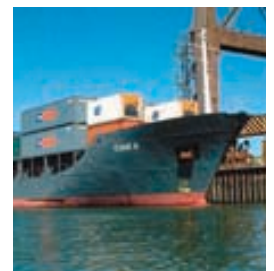
Packaging, handling, transport: What is the state of the goods subsequent to transport? A g-log will document shocks and climatic conditions accurately!



Product



Handling



Transport



g-log records everything – and your data is safeguarded

Registering **shock** and **climatic** conditions

Simple and reliable!

The g-log monitors and registers acceleration and climatic values during transport. This allows a reconstruction of all significant events.

The unit's shock measurement function is event-controlled and automatically registers all accelerations which exceed a defined threshold. The recorded data is saved together with the time.

An intelligent memory management system overwrites less critical events once the available memory is full. This prevents the loss of important measurements. Up to 3000 shock events with detailed gradients can be recorded with the unit's extensive memory capacity. And if needed, environmental conditions (humidity and temperature) can be recorded using an external sensor.

With its ultra-low power consumption, this makes it possible to document long-time transportation and storage.



What state are the roads in? How will the shipment be loaded or unloaded?



The package is defective. What about the product? Has it suffered damage?

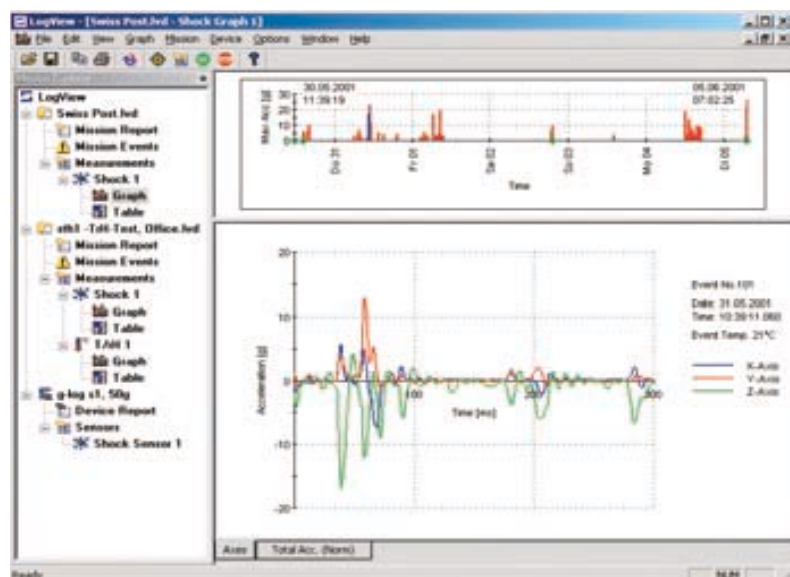


Analysis

Once the goods have arrived at their destination, the recorded data can be read out to a computer and analyzed with LogView, an easy-to-use software for programming and reading out the g-log data. The g-log is a real shock curve recorder. The detailed gradients of all three axes are recorded so that each individual event can be analyzed exactly if necessary.

Technical Data

Measuring Range	-50g to +50g
Response Threshold	freely programmable
Internal sensors	shock (tri-axial), temperature
External sensors	Temperature / Humidity
Measurement start/stop	programmable or manual
Memory capacity	Up to 3000 shock events Up to 100'000 T/rH-values
Dimensions	145 x 80 x 30 mm
Weight	approx. 470g
Case material	aluminum anodized
Interface	Serial RS-232
Operating temperature	-30°C to 70°C
Battery life-span	over 12 months



Software for analysis. Fast and simple procedures for printing reports and graphs.